

UCLA Community School

This PDF is based off a presentation created by teacher-powered ambassador Rebekah Kang and used with permission. Rebekah is a 6th-12th grade Special Education teacher at UCLA Community School (UCS) and one of the founding teachers.

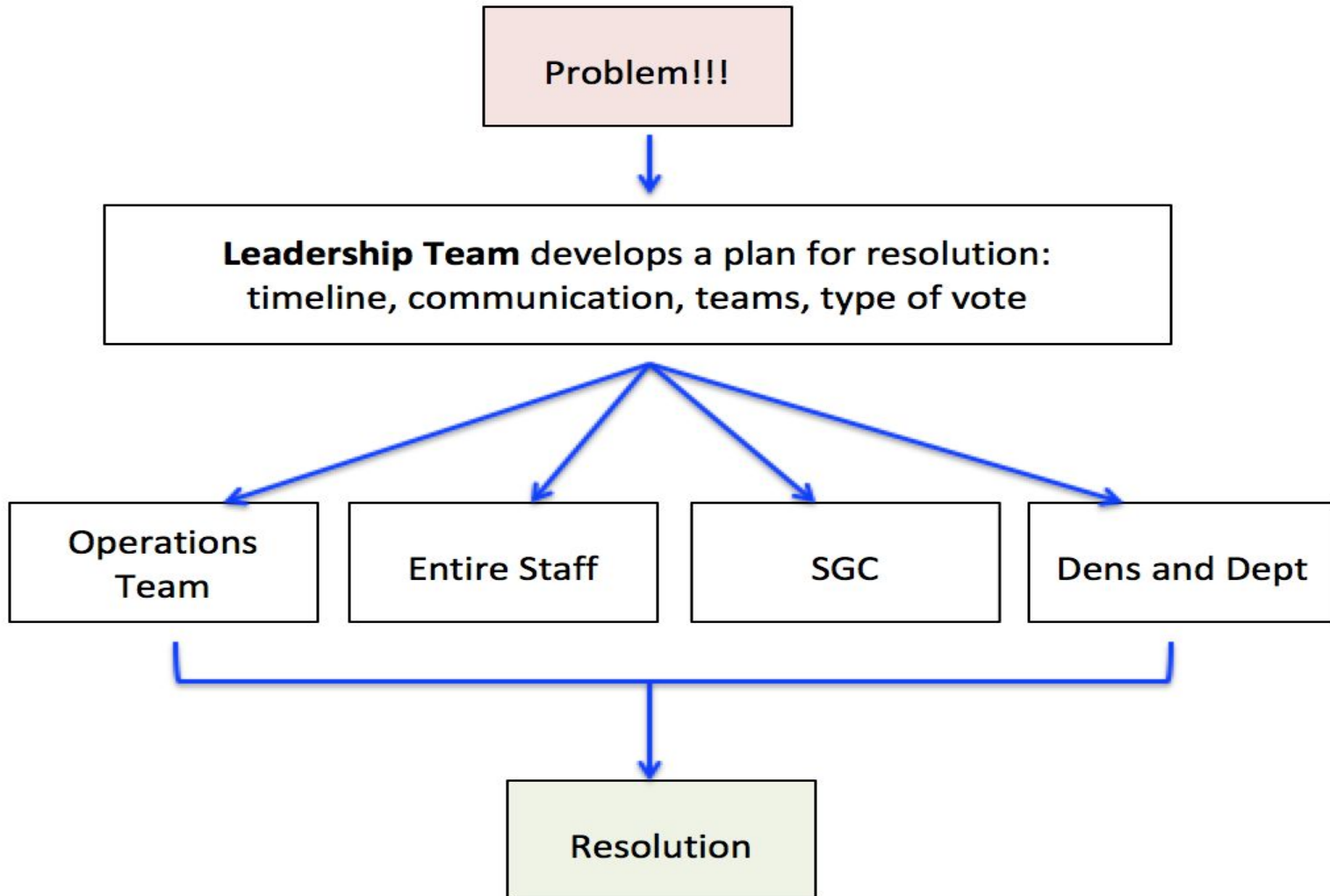
For more information about UCS contact Rebekah Kang at rmkang@gmail.com

- Los Angeles Unified School District
- United Teachers Los Angeles
- UCLA Partnership
- K-12 Span School
- Opened 2009
- 90% Socioeconomically disadvantaged
- 44% English Learners
- 10% Special Education



Team	Members	Purview
Instructional Leadership Team	Administrators, Den/Dept Leads	K-12 Articulation, Vision/Mission, Curriculum, Instruction, Assessment, Prof Dev, Research
Operations Team	Administrators, Den/Dept/Div Chairs, Leads, Counselors, Coordinators, Coaches, SAA, UCLA Liaison	Calendar, Schedule, Events, Matrix, Staffing & Hiring
School Governing Council	UCLA Partners, Parents, Students, Teachers, Administrator, Coordinator	School-wide Plan, Budget, Principal Evaluation, Research, Accountability, Elect to Work Agreement
Support Staff	Administrators, Counselors, Coordinators, Coaches, SAA	Calendar, Schedule, Events
Dens/Departments	Leads, Teachers	Curriculum, Instruction, Assessment
Dens/Divisions	Chairs, Teachers	Learning Supports, Intervention, Parent Engagement
OTHER: COST, LAT, ELAC	Counselors, Coordinators, Parents, etc.	Student support

Addressing Issues



How Does the Leadership Team work?

- Administrators (3)
- Lead Teachers (8)

- Bi-weekly after school Friday meetings
- 4-5 Release Days
- Summer and Winter retreats
- \$5000 Stipend



How Does the Leadership Team work?

- Process for setting agenda
 - Call for items
 - Items are defined (vote, discussion, etc.)
 - Items are given time limits
- Time keeper
- Consensus vote



What is the Operations Team?

Members:

- Administrators
- Lead Teachers
- Dept and Grade Level Chairs
- Coordinators
- Counselors
- SAA
- \$500 Stipend



How does the Operations Team work?

Meeting Times:

- After school once a month
- On-call during hiring and matrix development season

Purview:

- Calendar and events
- Schedules including testing
- Matrix development
- Staffing and Hiring



What happens in Dens and Departments?



- Curriculum Development
- Common Assessment Development
- Professional Learning
 - Data analysis
 - Action research
 - Reflection
- Intervention, events, etc.

LAUSD 2015 School Experience Survey (39 faculty and staff)

School Climate for Staff (% agree or strongly agree)	UCLA-CS	LAUSD
This school is a supportive and inviting place for staff to work.	97%	74%
This school promotes trust and collegiality among staff.	95%	68%
This school promotes personnel participation in decision-making that affects the school practices and policies.	92%	68%